

Solutions

If we only describe the solution OUTSIDE the cell

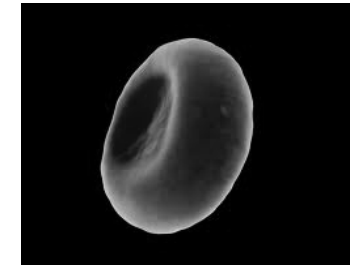
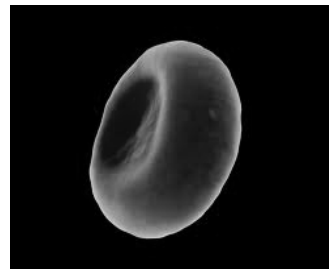
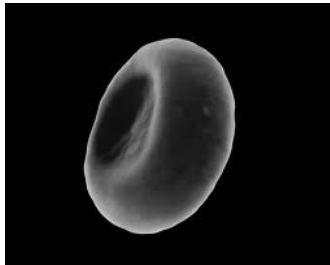
Has a **Lower** concentration of solute outside the cell.

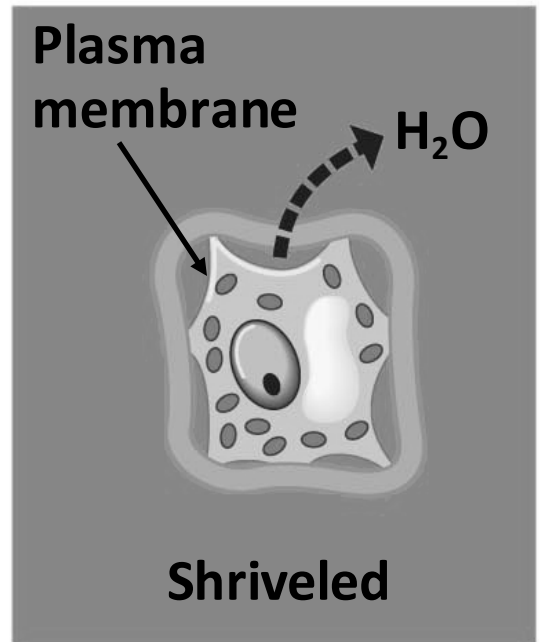
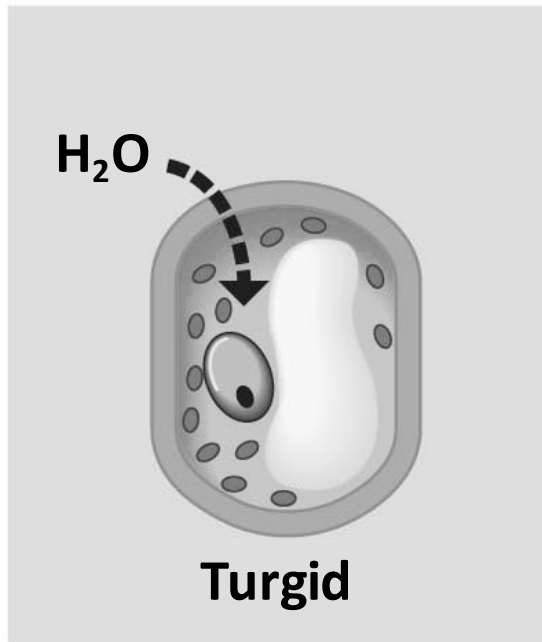
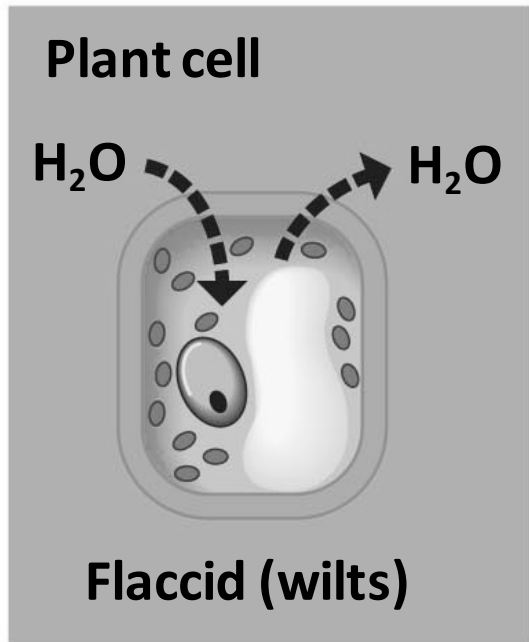
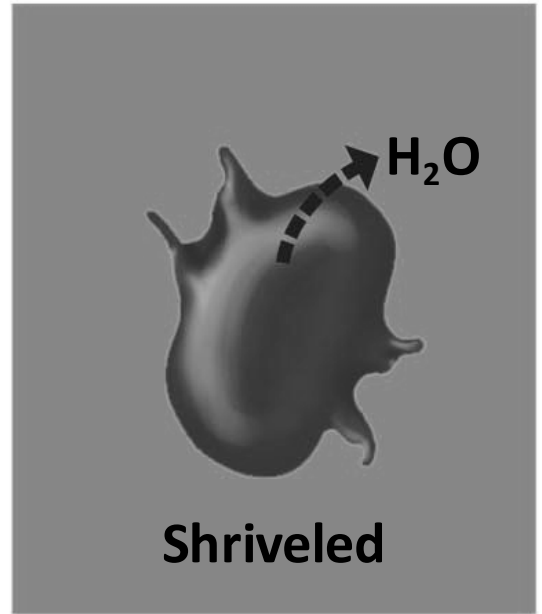
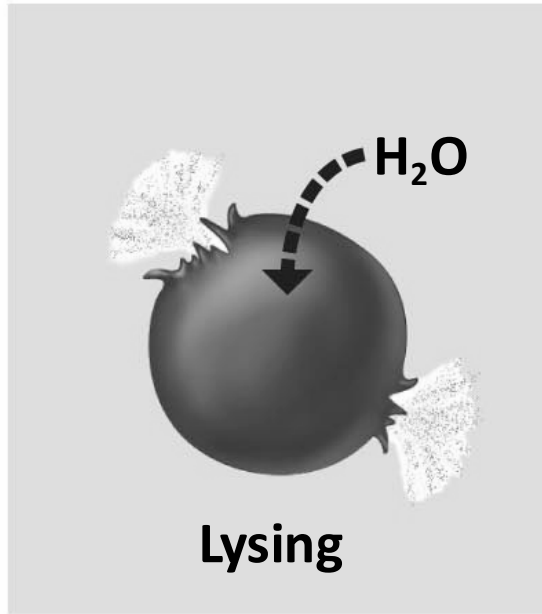
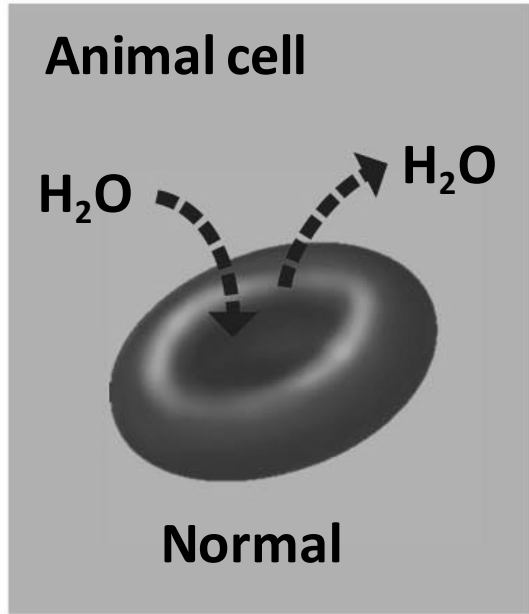
Has an **equal** concentration of solute outside the cell.

Has a **Higher** concentration of solute outside the cell.

Situation: Outside the Cell

Fact: Salt SUCKS





(a) Isotonic solution

(b) Hypotonic solution

(c) Hypertonic solution