

Not Everyone has a 4-Chambered Heart



fish

2 chamber



amphibian

3 chamber



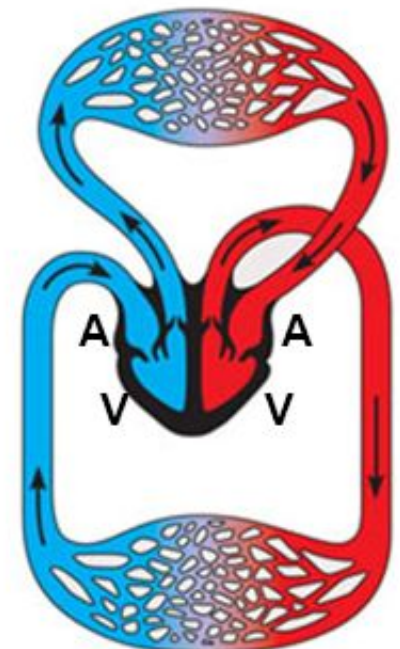
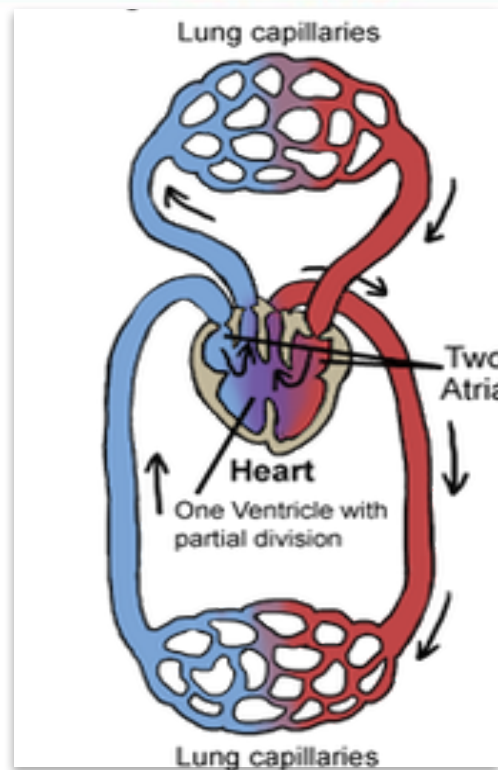
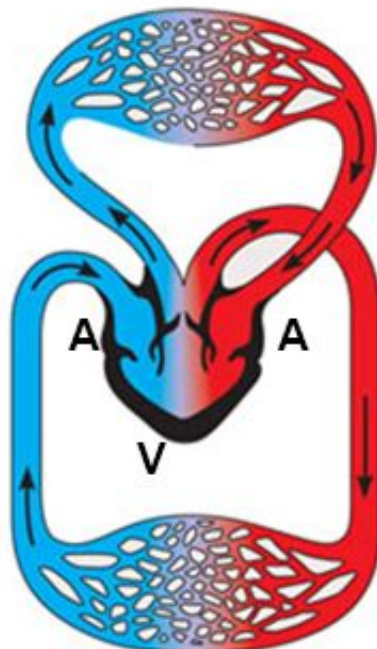
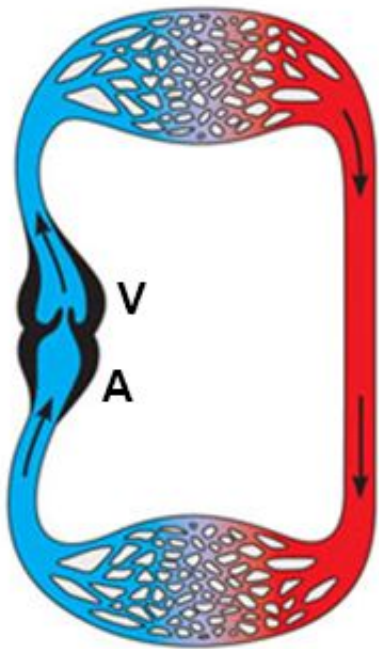
Turtle

3.5 Chambers



birds & mammals

4 chamber



♥ Evo. Note Guide



fish

2 chamber



amphibian

3 chamber



Turtle

3.5 Chambers



birds & mammals

4 chamber

Heart structure	___ atria ___ ventricle			
Limitations	<u>Inefficient:</u>	<u>More Efficient</u>	<u>Even More Efficient</u>	<u>Very Efficient</u>
How does this organism deal with the limitation				