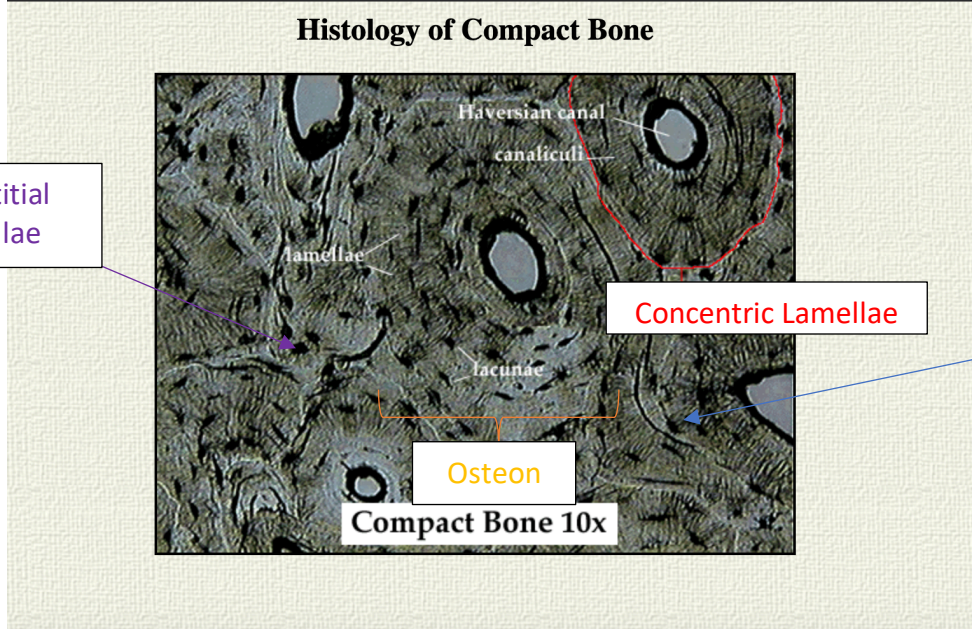


# Pre-lab 12 – Histology

## Compact Bone – Osseous Connective Tissue

[http://homepage.smc.edu/wissmann\\_paul/bones/1compactbonehistology.html](http://homepage.smc.edu/wissmann_paul/bones/1compactbonehistology.html)



1. Make a large, colorful drawing of compact bone tissue at the magnification designated by the instructor.
2. Label:
  - Central (Haversian) canal
  - Osteocyte in lacuna
  - Canaliculi
  - Concentric lamellae
  - Interstitial lamellae
  - Osteon

## Skeletal Muscle Tissue

Labels to Include:

- Nuclei
- Sarcolemma
- Striations

○ Draw a dark line around 1 muscle fiber (AKA 1 Muscle Cell)

Zoom in Even more.

