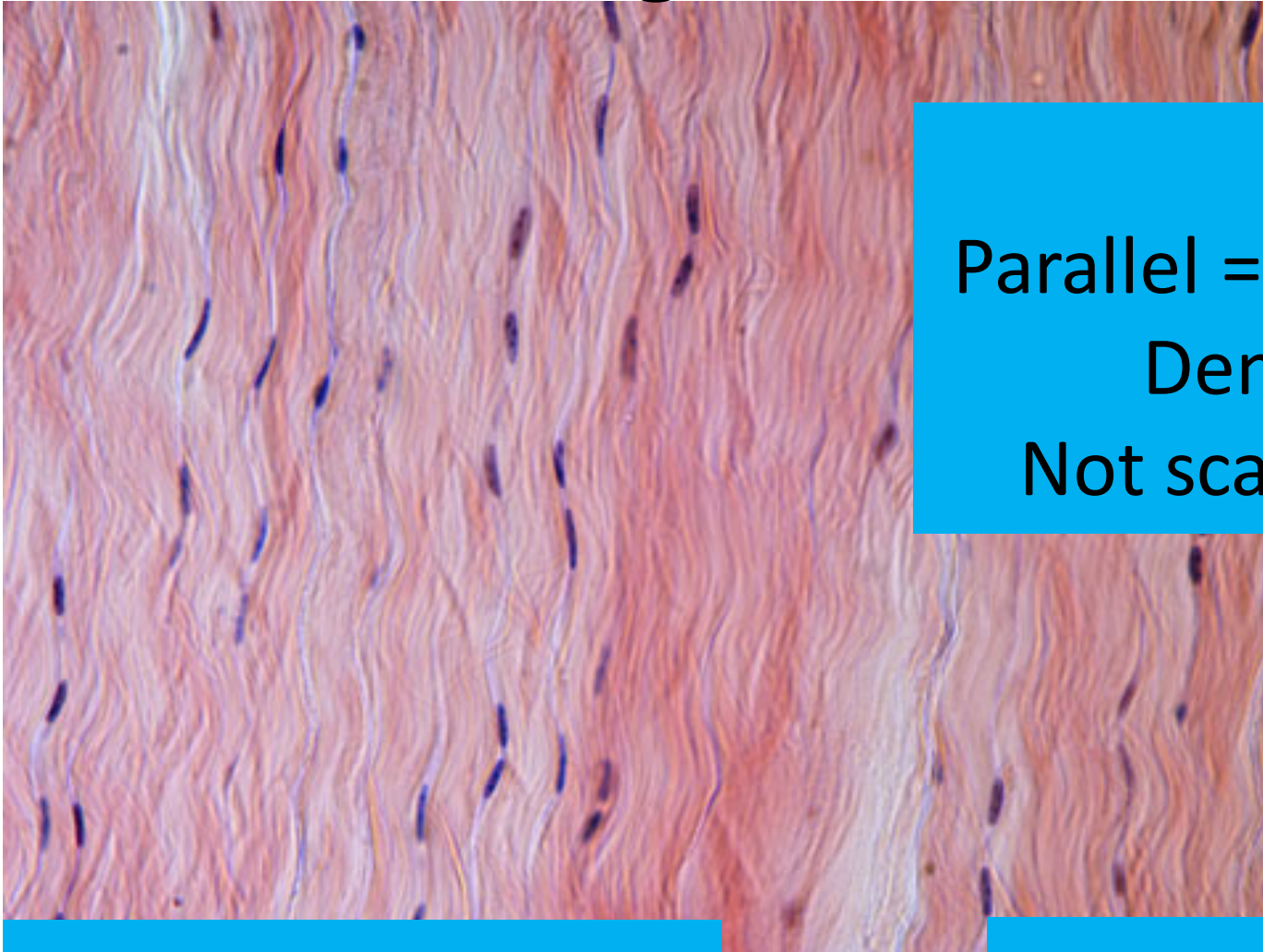


# Connective Practice

## Dense Regular Connective Tissue



### Hint:

Parallel = Collagen (strong)  
Densely packed  
Not scattered (regular)

### Location

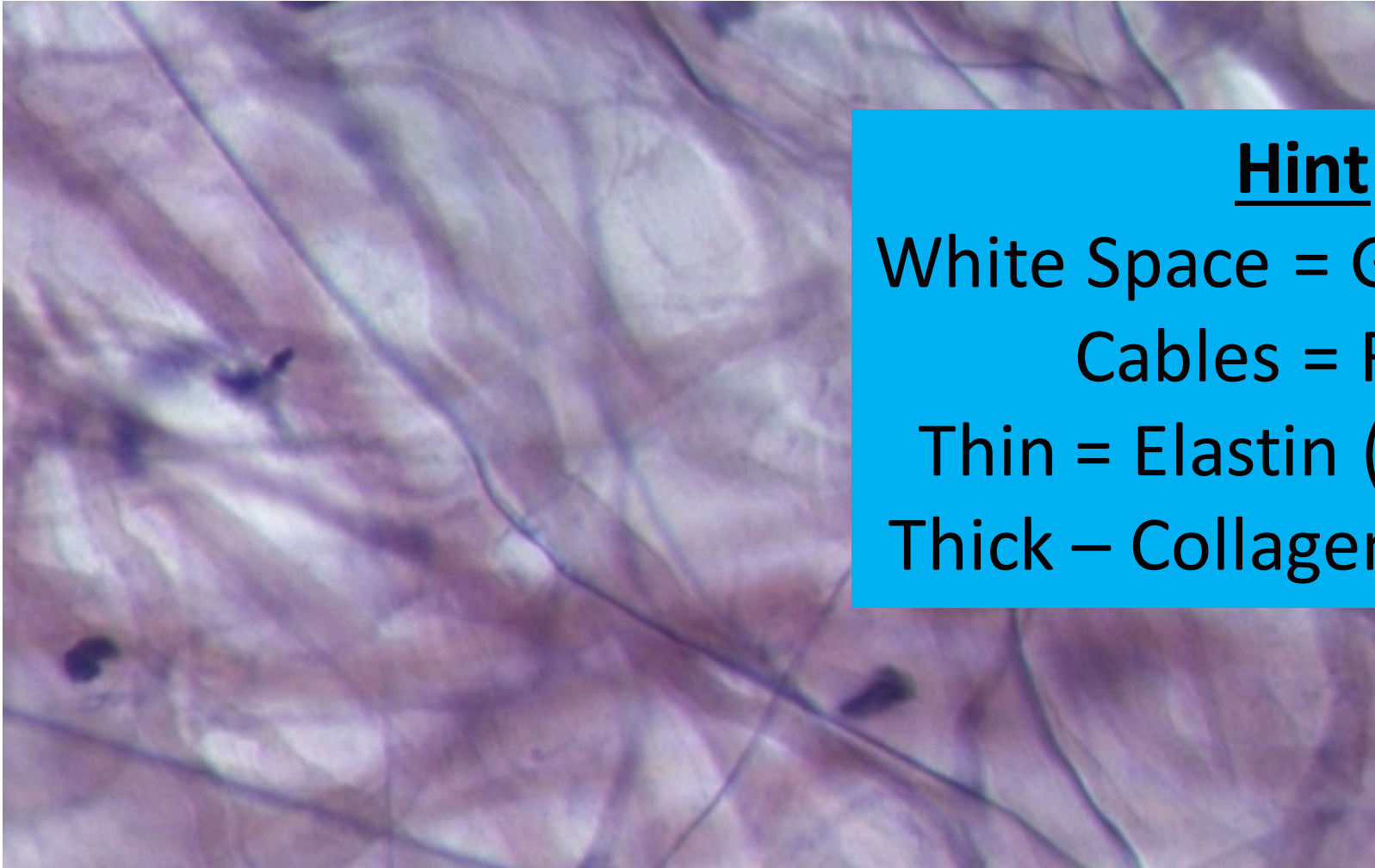
Tendons/Ligaments

### Function

Strong, ties bones together

# Connective Practice

## Areolar



### Hint:

White Space = Ground Sub.

Cables = Fibers

Thin = Elastin (Flexibility)

Thick – Collagen (Strength)

**Location**

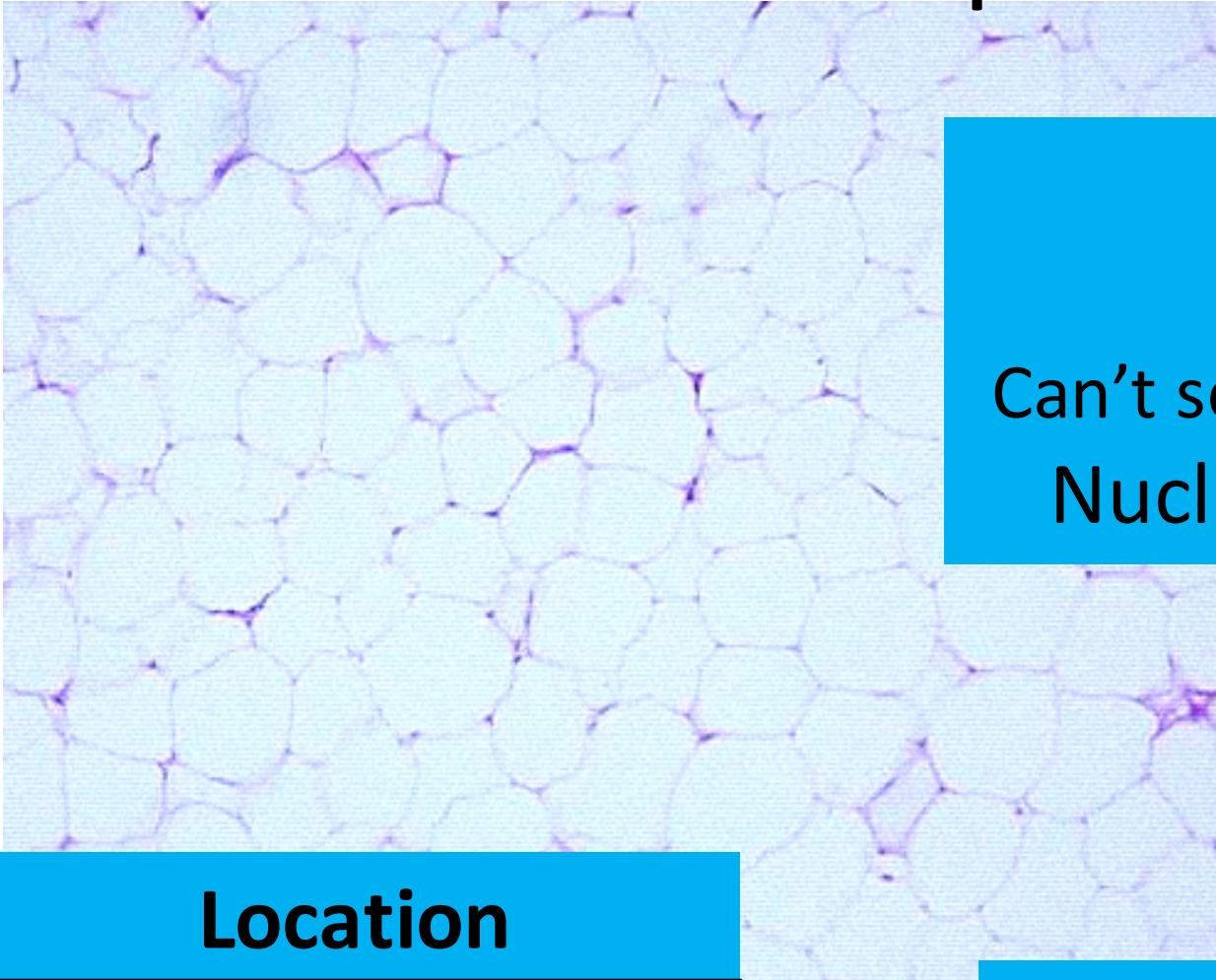
Skin

**Function**

Packing Material

# Connective Practice

## Adipose



### Hint:

See cellularity  
Can't see organelle or nucleus  
Nucleus pushed to side

### Location

Butt, Breast,  
Abdomen

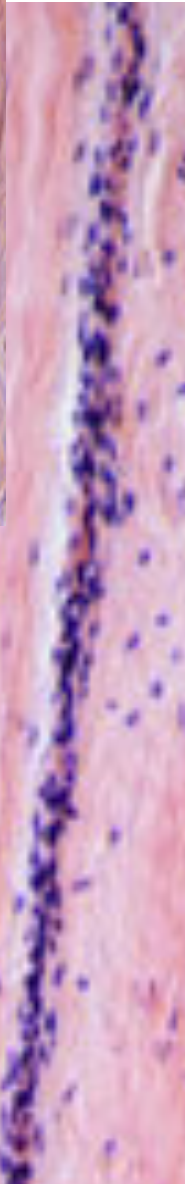
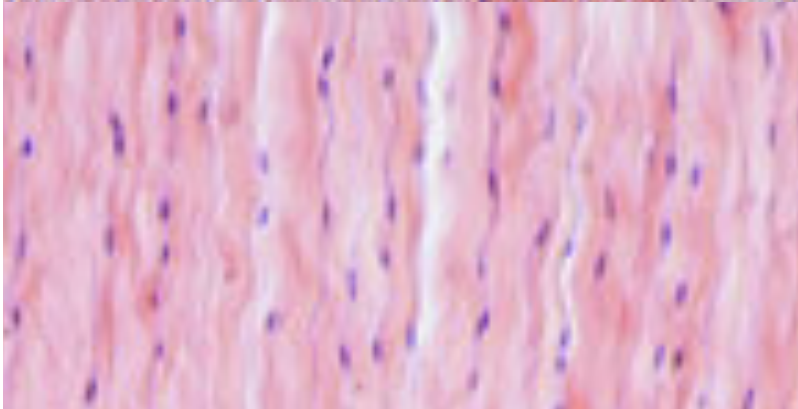
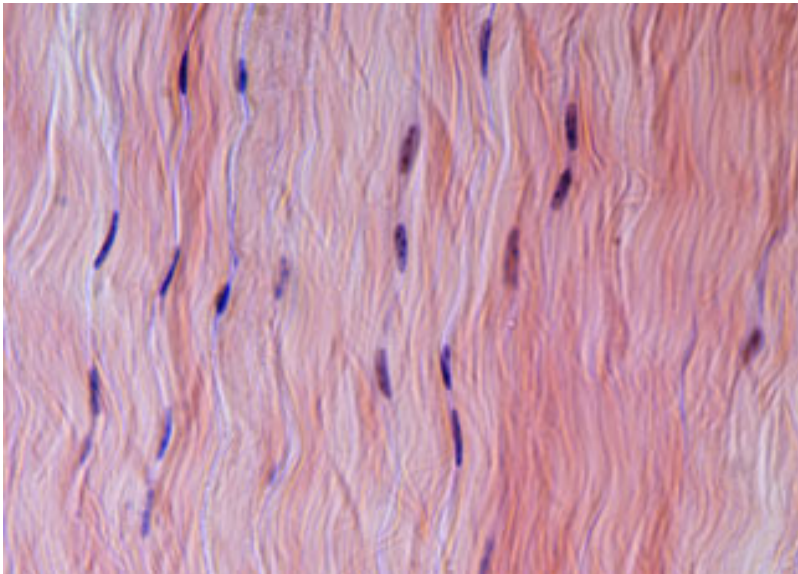
### Function

Insulation, protection



# Connective Practice

## Dense Connective Tissue



### Hint:

Rectangular Nuclei (squished)

Pink Lines = collagen

Densely packed – no open space in extracellular matrix

Regular (parallel)

Strong! Stretch before Tear

### Location

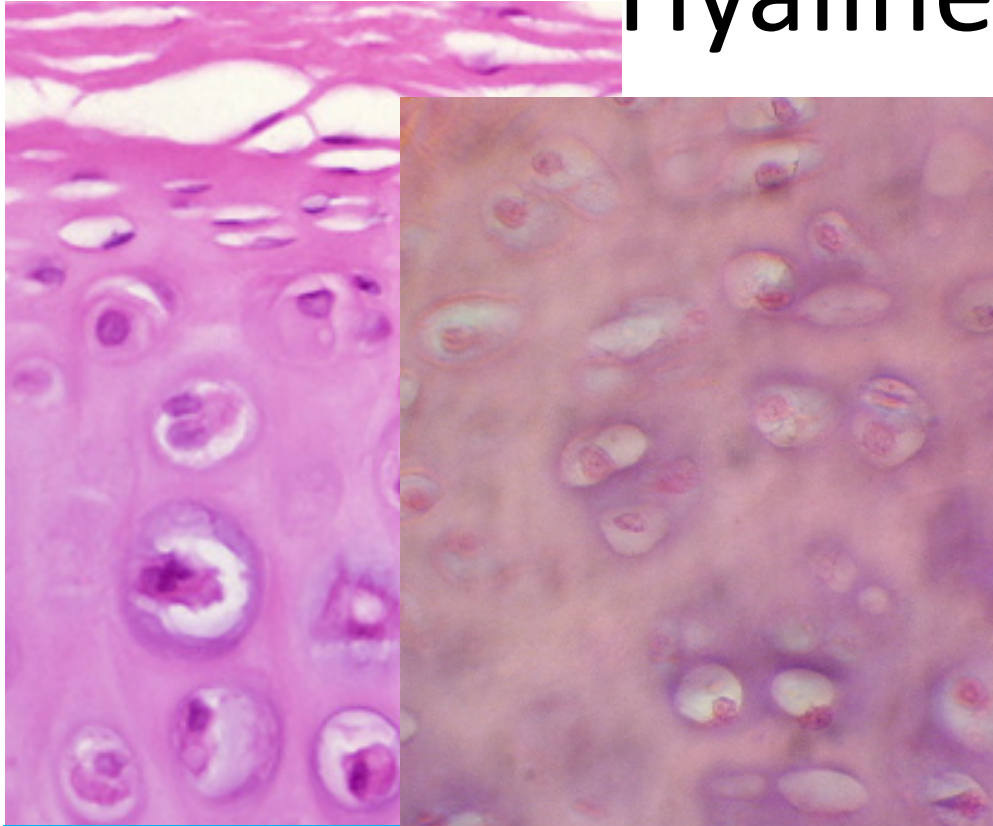
Tendons & Ligaments

### Function

Bind/Links

# Connective Practice

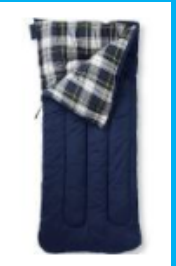
## Hyaline Cartilage



### Hint:

Strong/solid Extracellular matrix

Lacuna = Cavity



(Carve a whole to make room for each cell type.)

### Location

Entire Embryonic skeleton

Thoracic

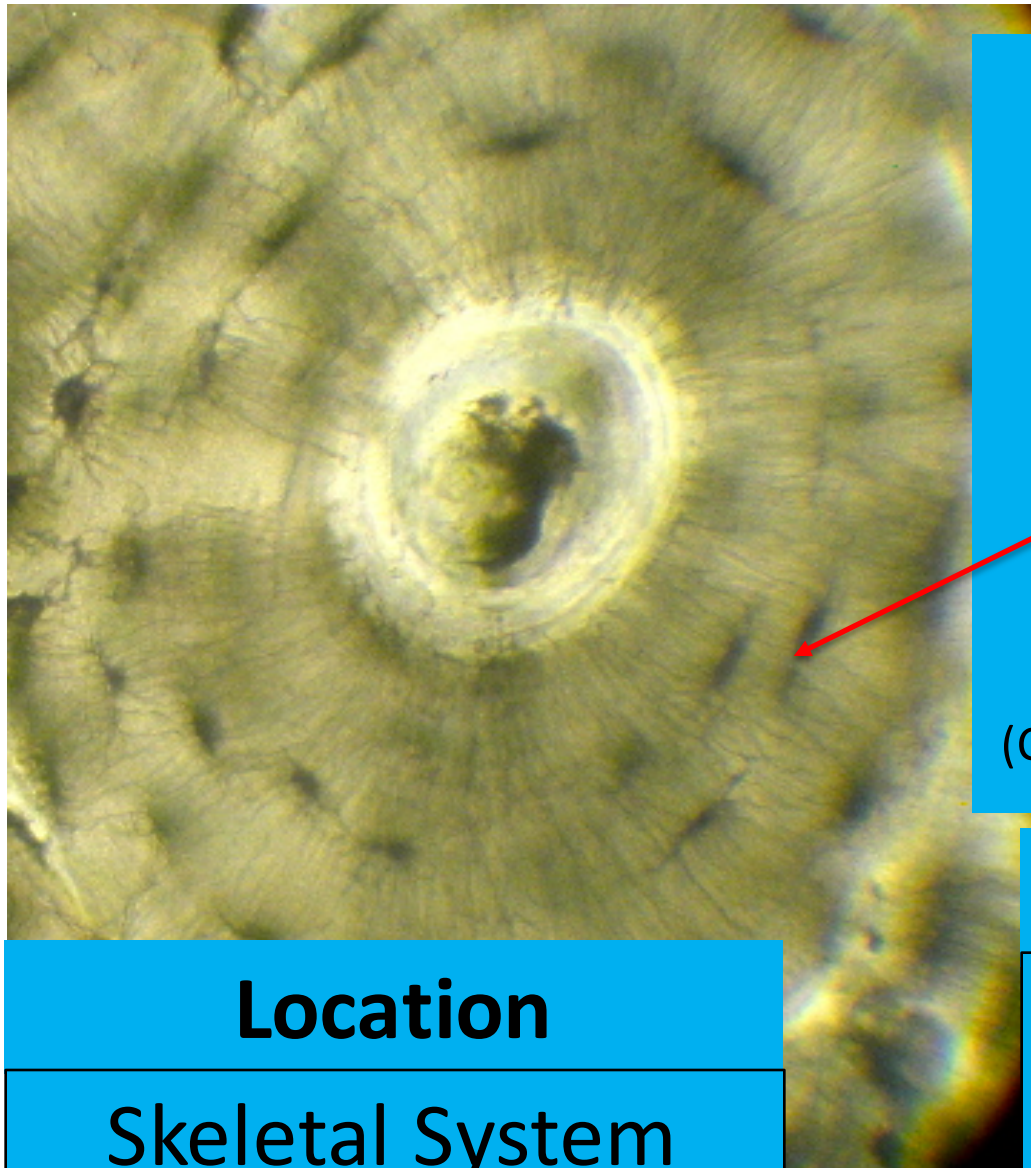
Trachea

### Function

Support, protection

# Connective Practice

## Osseous



### Hint:

*Looks like a tree trunk*  
Strong/solid Extracellular  
matrix

Dark spots on edges = Lacuna = Cavity  
Dark spot in middle = Central Canal

(Carve a whole to make room for each cell type.)

### Location

Skeletal System

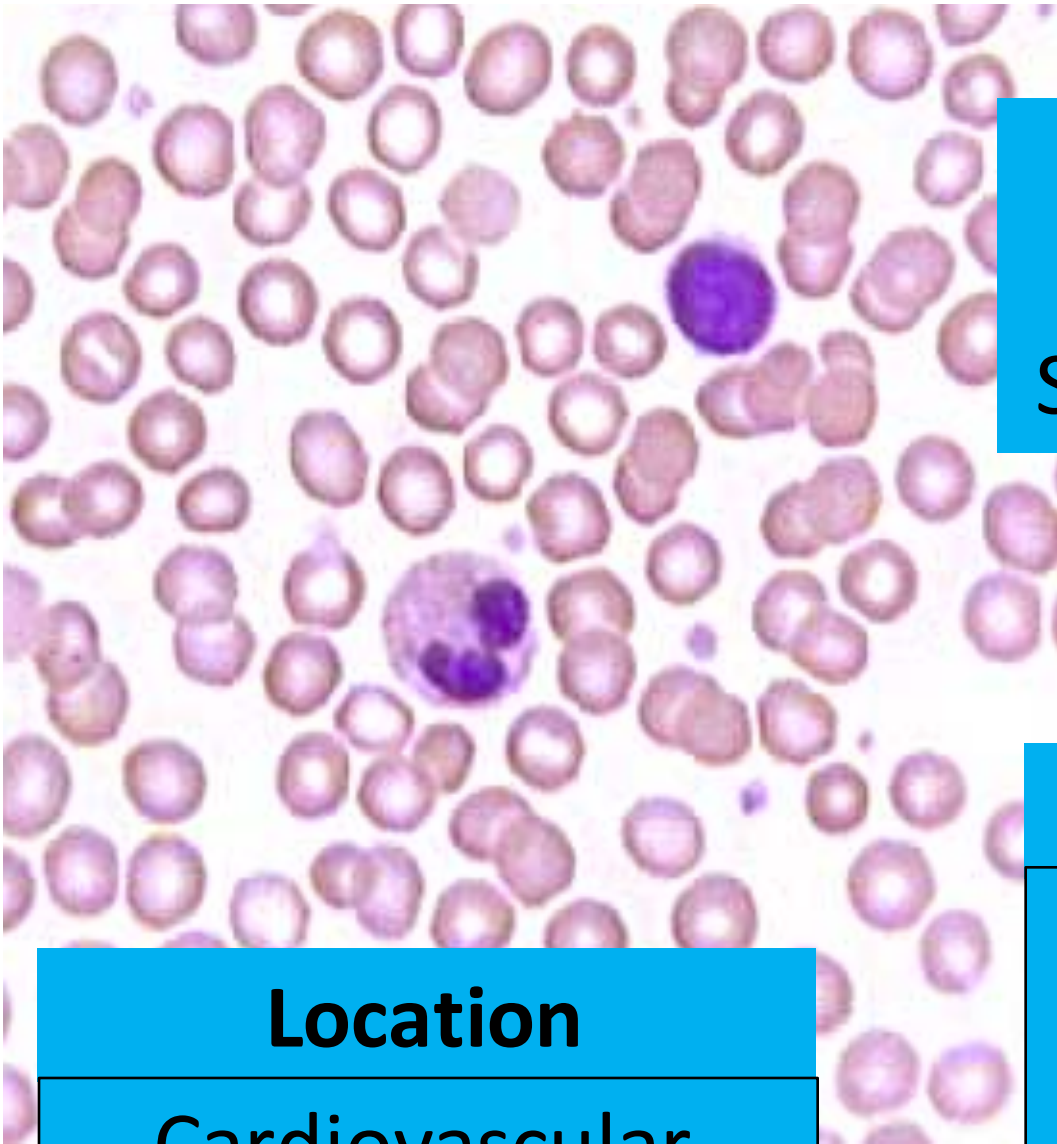
### Function

Support, protection, Ion  
storage (Ca<sup>++</sup>/Phosphate)



# Connective Practice

## Blood



### Hint:

Some with Nuclei (WBC)  
Some Without Nuclei (RBC)

### Location

Cardiovascular

### Function

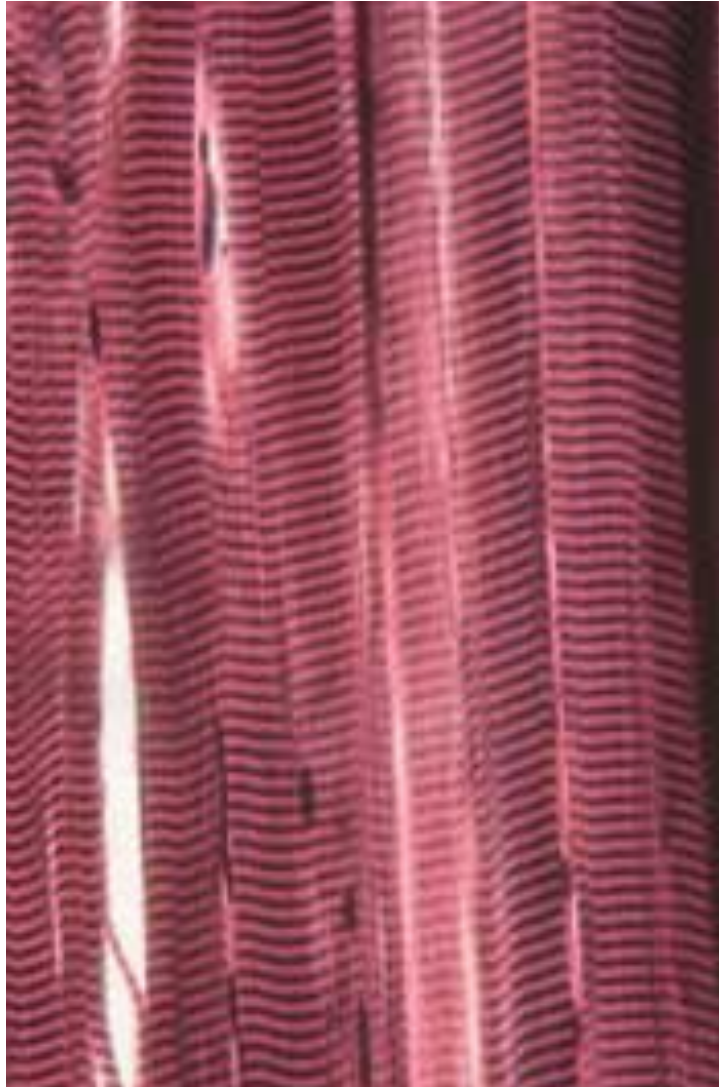
Transport

RBC: Transport  $O_2$

WBC: Immune Cells

# Muscle Practice

## Skeletal



### Location

Attach to bone

### Hint:

Long fibers  
Striation

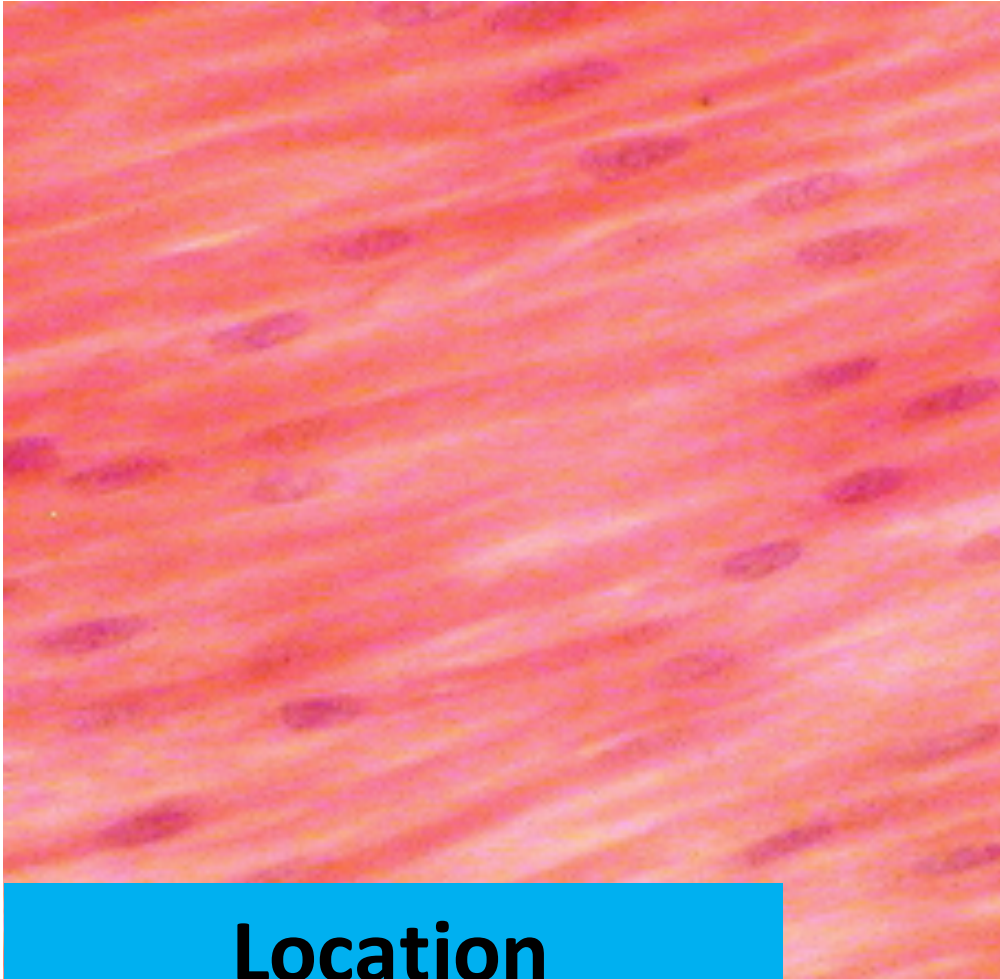
### Function

Movement  
Facial expression



# Muscle Practice

## Smooth



### Location

Inside hollow  
Organ

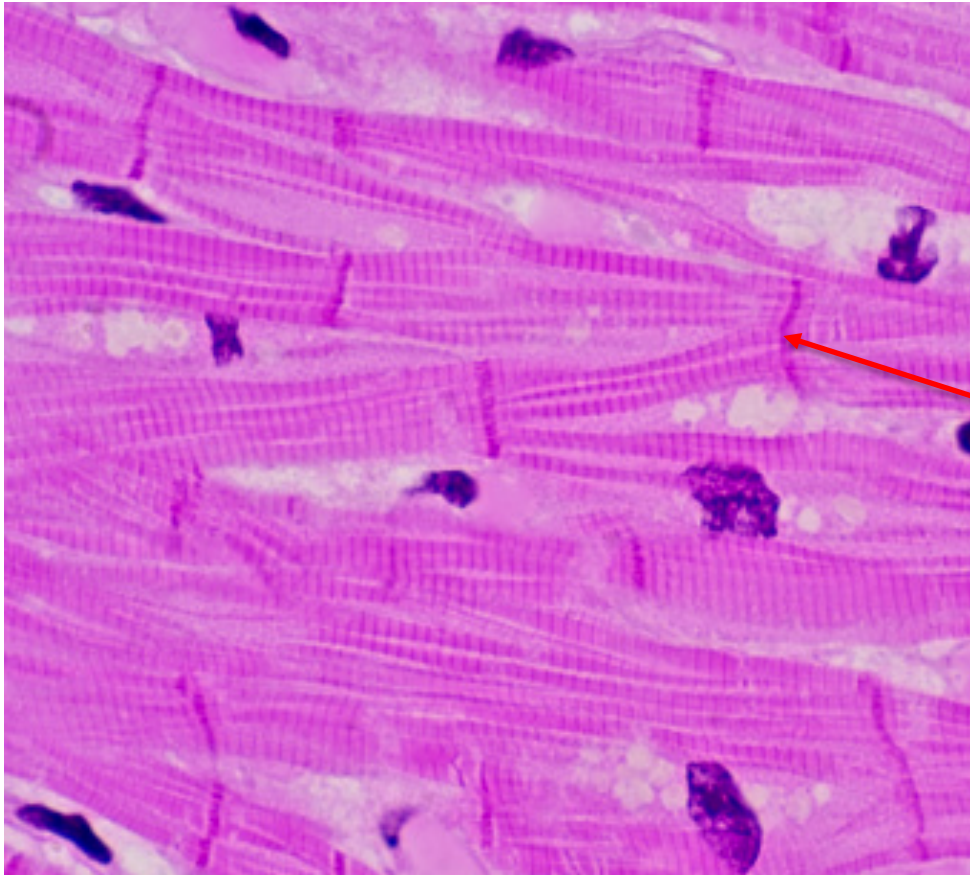
Hint:  
Striated  
No Discs

### Function

Move stuff through tubes

# Muscle Practice

## Cardiac



**Hint:**  
Striated  
Branched  
Intercalated discs

**Location**

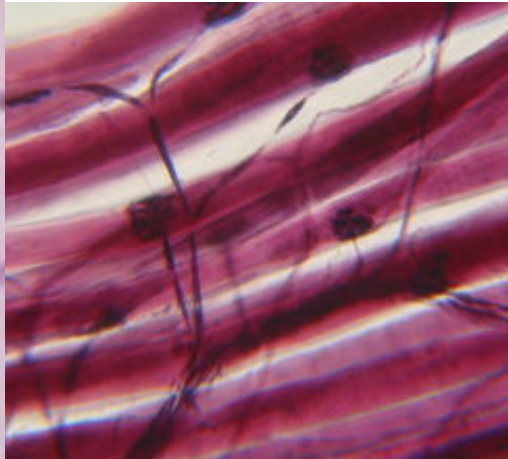
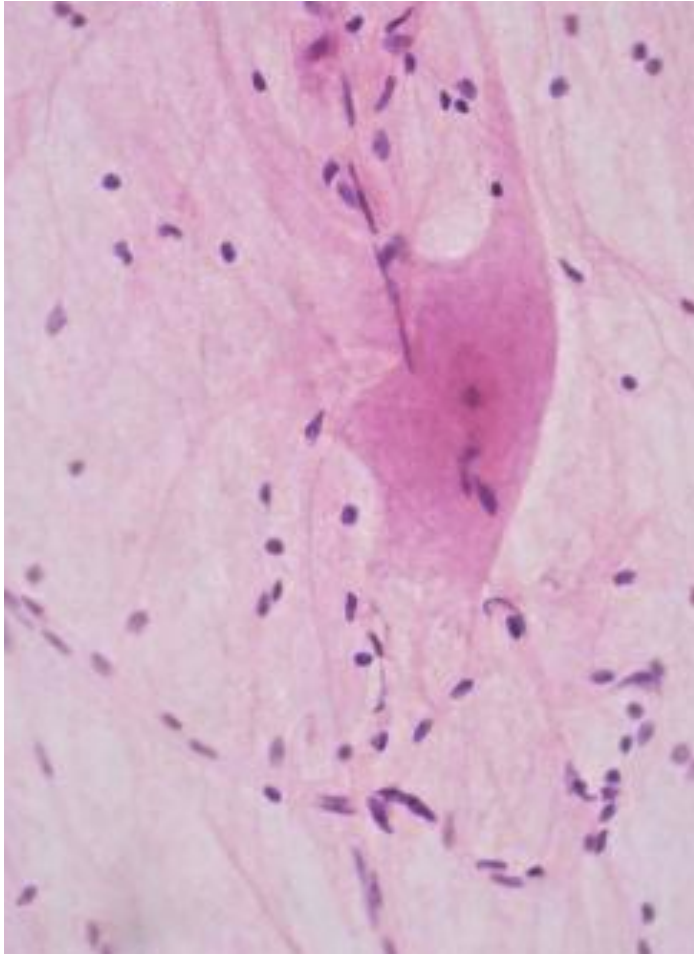
Heart

**Function**

Pump your blood

# Nervous Practice

## Nervous Tissue



### Hint:

Big guy = Neuron  
Little dots = Neuroglia

### Location

Brain, spinal cord, & nerves.

### Function

Pass signals